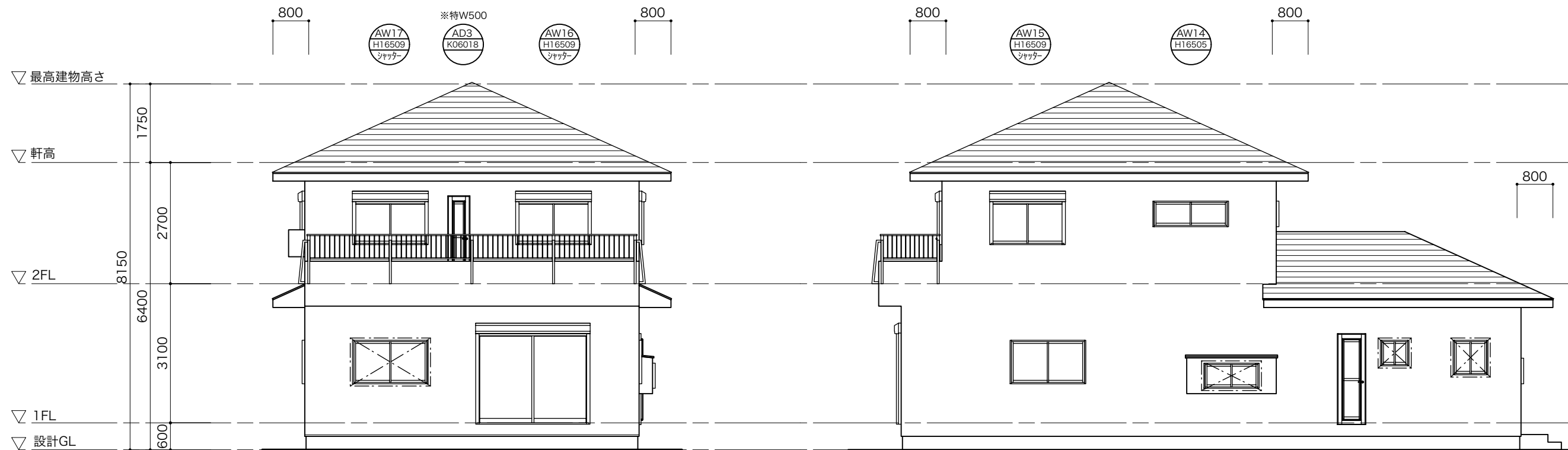


階	番号	計算式[mm]	床面積[m ²]
1階	①	3,040 × 1,820	5,532,800
	②	3,640 × 3,183	11,586,120
	③	10,010 × 7,280	72,872,800
1階合計			89,991,720

階	番号	計算式[mm]	床面積[m ²]
2階	④	7,280 × 7,280	52,998,400
2階合計			52,998,400

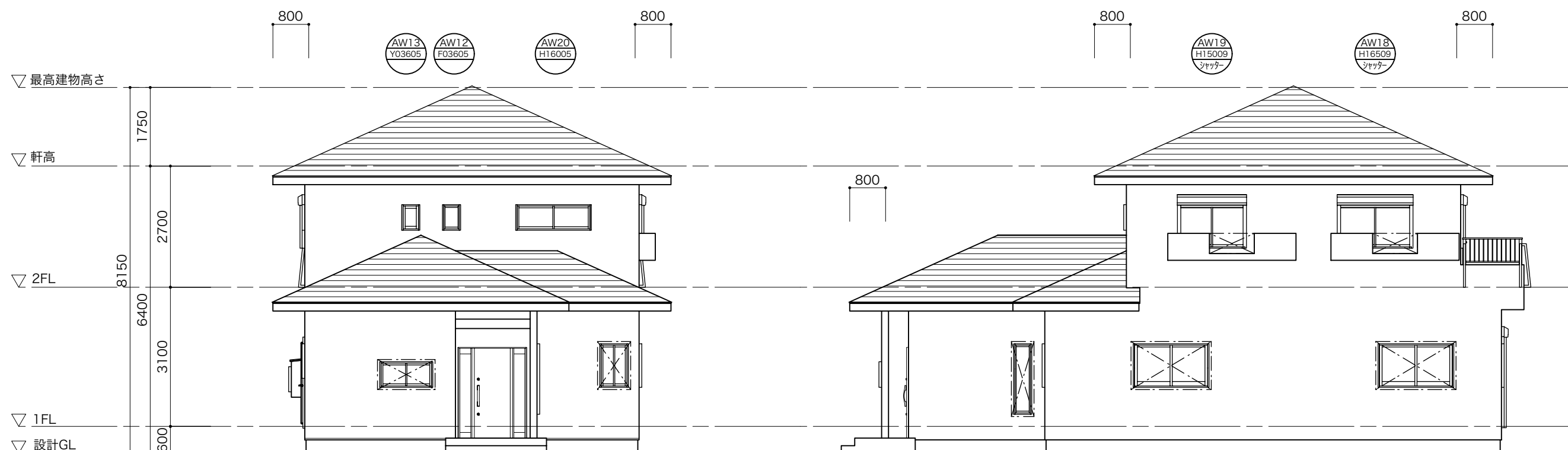
1階2階の合計延べ床面積：89.99 + 52.99 = 142.98m²

[建物求積図 1:200]



[南立面図]

[東立面図]



[北立面図]

[西立面図]